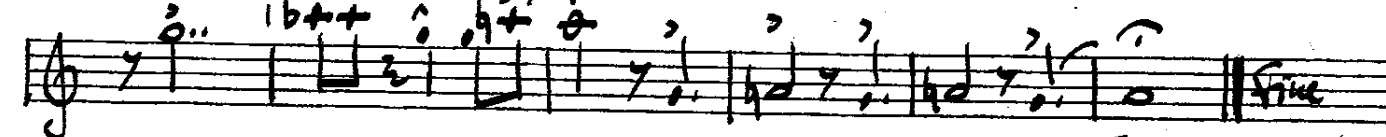
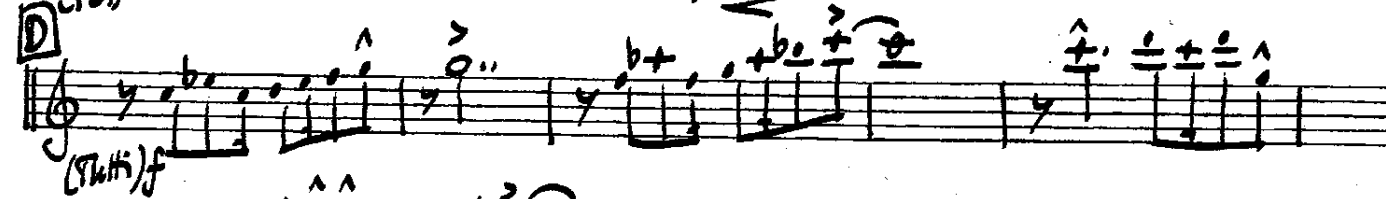
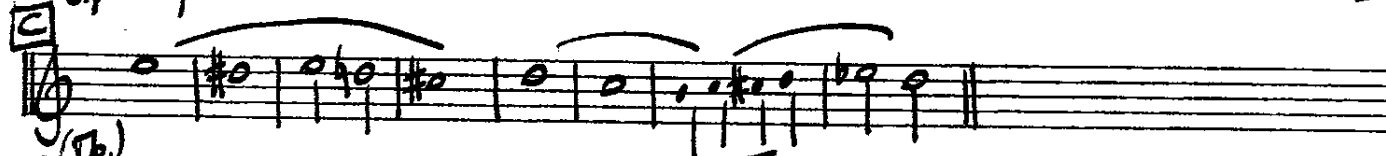
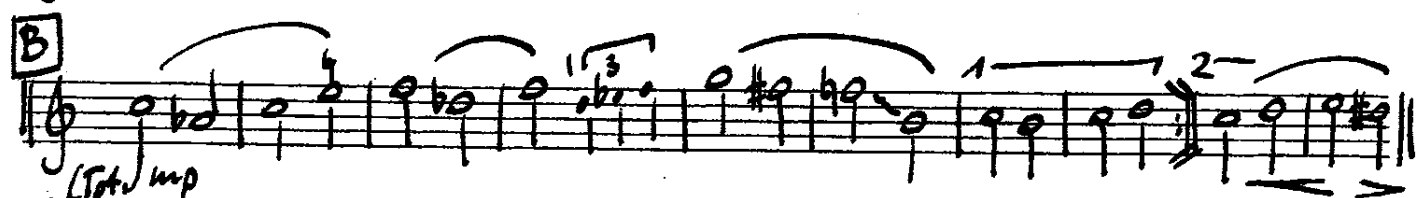
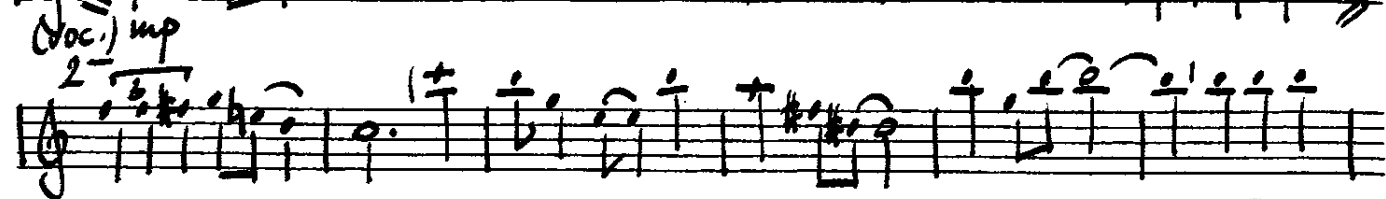
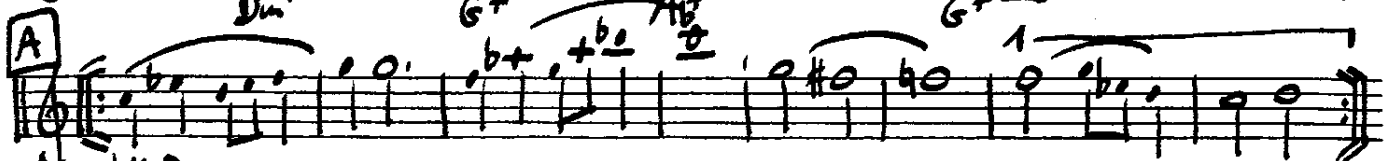
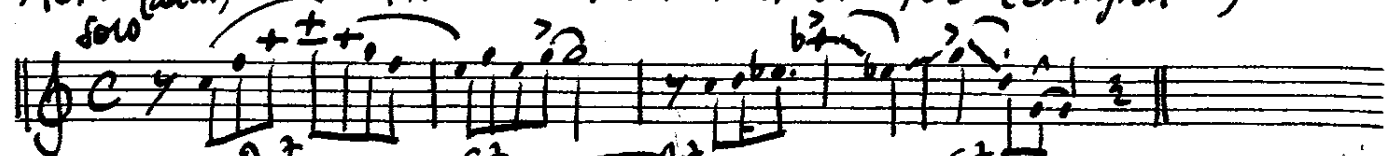


As. 1 (ad lib) solo WHAT GOOD AM I WITHOUT YOU (Ellington '30)



As. 2/Bars. WHAT GOOD AM I WITHOUT YOU (Ellington '80)

Handwritten musical notation for section A, starting with a treble clef and a 4/4 time signature. The notation includes various musical symbols such as notes, rests, and dynamic markings like *mp* and *mp* with an accent. A box labeled "A" is present at the beginning of the first staff. A box labeled "To Bars." is present at the end of the fourth staff.

Handwritten musical notation for section B, starting with a treble clef and a 4/4 time signature. The notation includes various musical symbols such as notes, rests, and dynamic markings like *mp*. A box labeled "B (Tpt.)" is present at the beginning of the first staff.

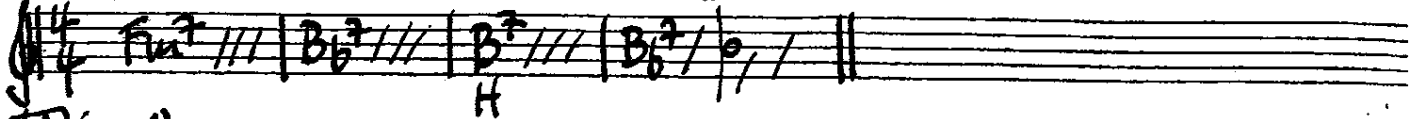
Handwritten musical notation for section C, starting with a treble clef and a 4/4 time signature. The notation includes various musical symbols such as notes, rests, and dynamic markings like *mp*. A box labeled "C (Tb.)" is present at the beginning of the first staff.

Handwritten musical notation for section D, starting with a treble clef and a 4/4 time signature. The notation includes various musical symbols such as notes, rests, and dynamic markings like *f*. A box labeled "D" is present at the beginning of the first staff.

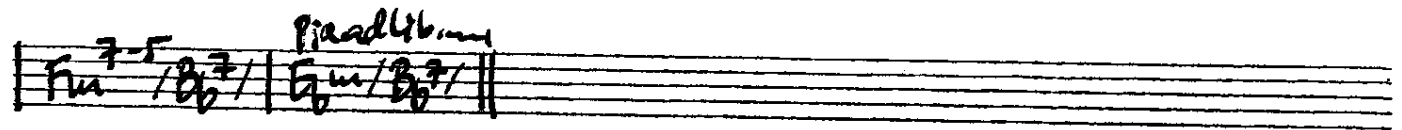
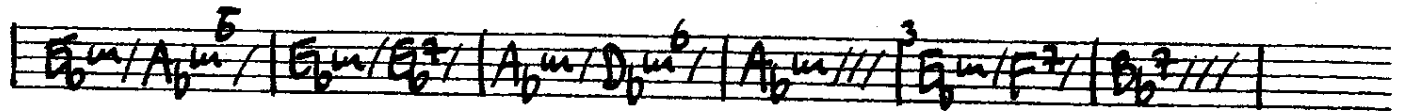
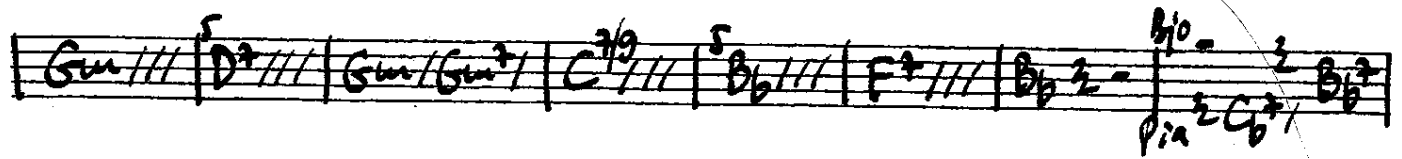
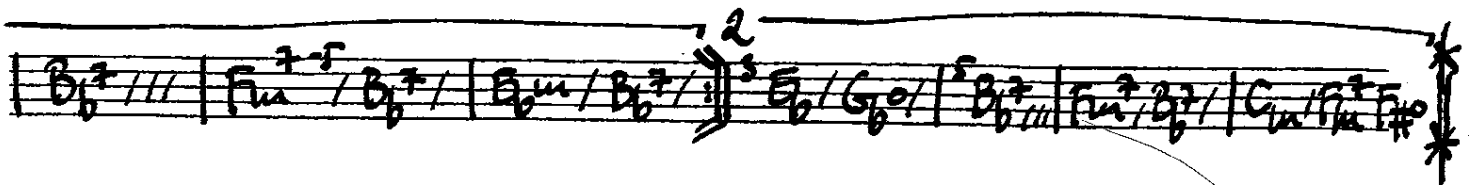
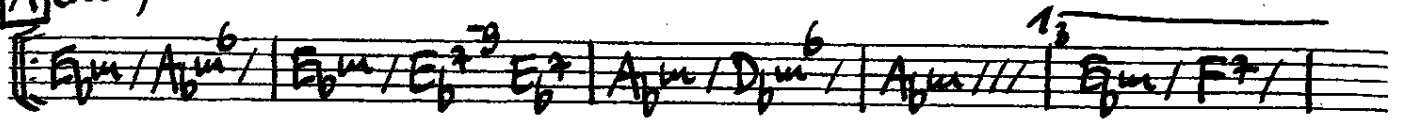
Pia/Bio
Medium-Slow

WHAT GOOD AM I WITHOUT YOU (Aja/Ellington '30)

be vib.



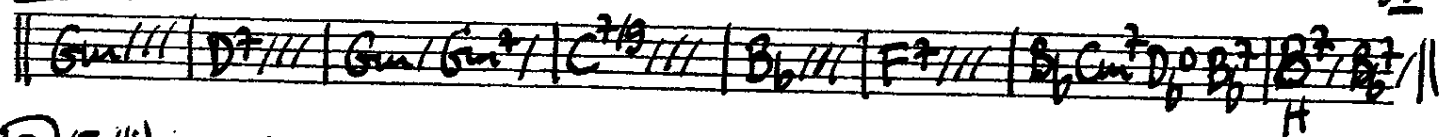
[A] (Vocal)



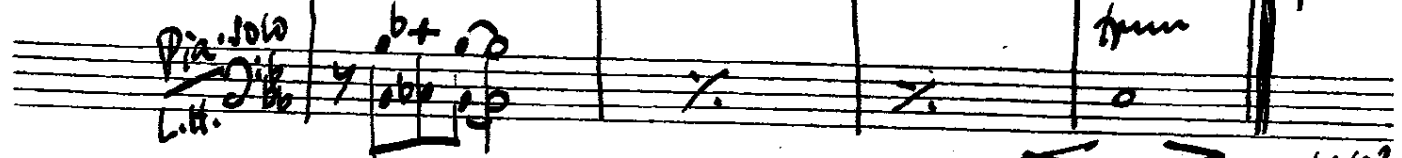
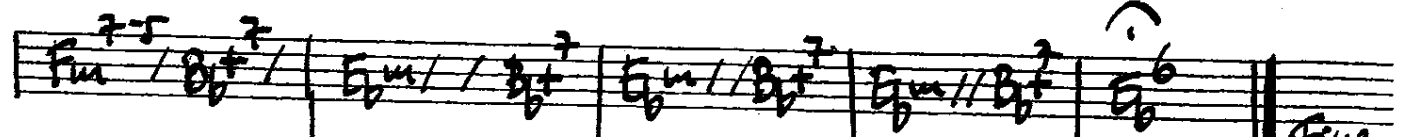
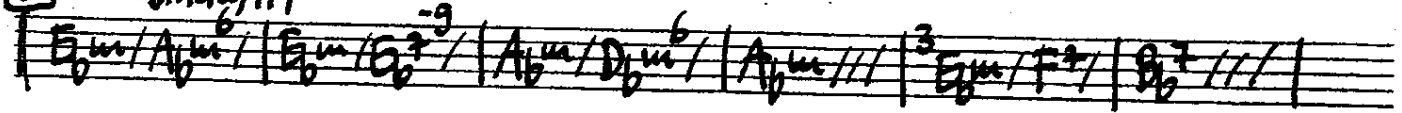
[B] (Tpt.) strictly 4/4

= [A] al

[C] (Tb.)



[D] (Tutti) strictly 4/4

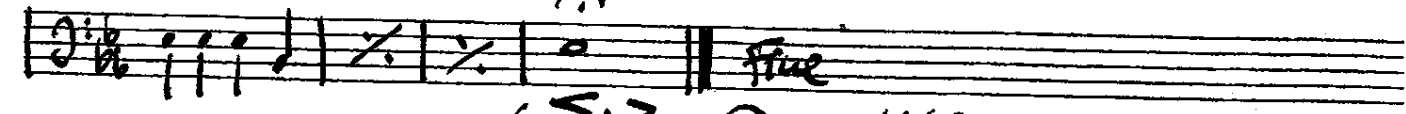
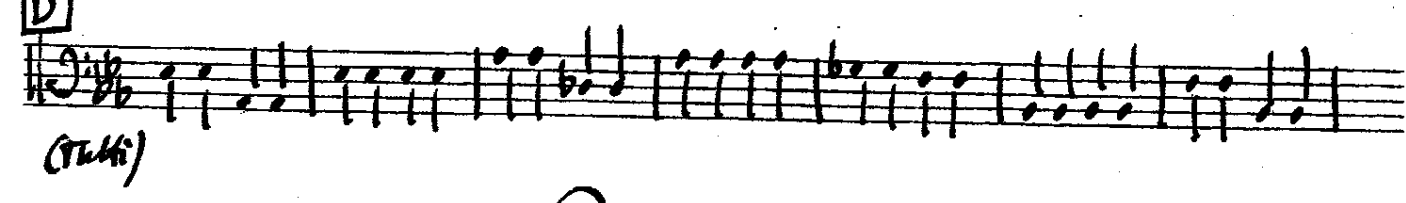
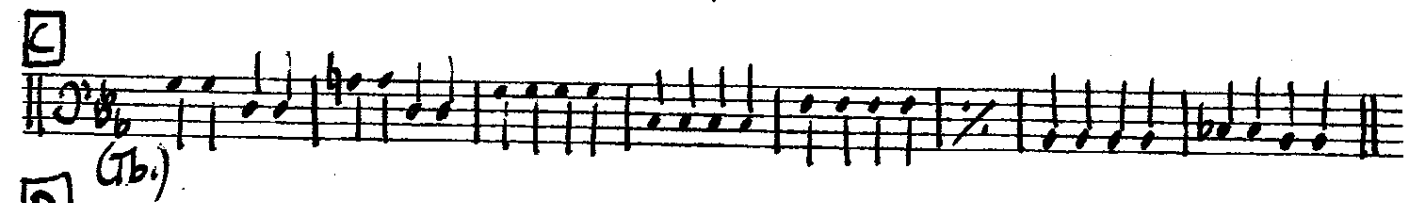
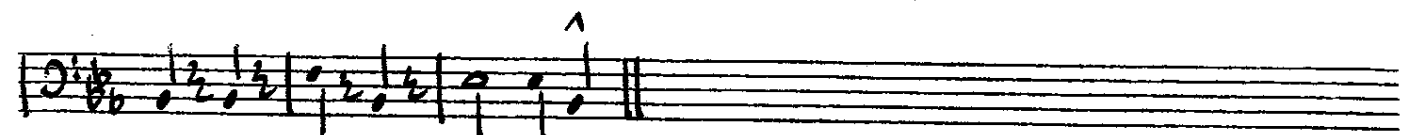
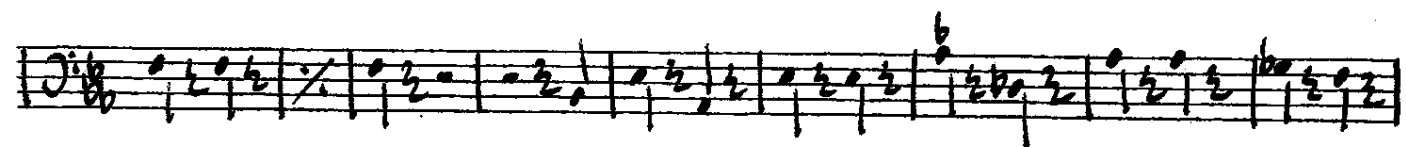
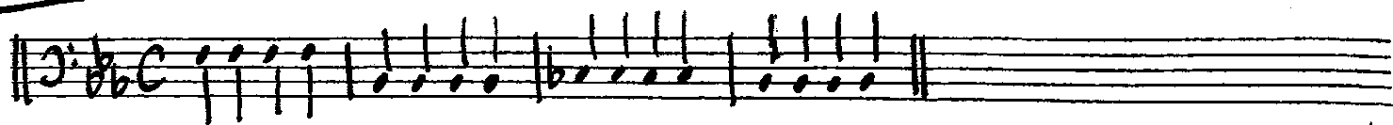


Pia. Solo
L.H.

© Jacobi '03

Sps.

WHAT GOOD AM I WITHOUT YOU (Ellington '30)



(arco) > © 1930

Tpt. 1 open WHAT GOOD AM I WITHOUT YOU (Ellington '30)

[A] Harmon Mute in

(Voc.)

[B] Solo

Sweet (A. Whetol)

[C] (Tb.)

[D] (Tutti) f

decruc.

Free

© Jacobi '03

Vocal

WHAT GOOD ARE DAYS WITHOUT SUNSHINE / YOU MADE THE SKIES ABOVE BLUE /
 NONE OF YOUR GONE DAYS ARE DREARY / WHAT GOOD AM I WITHOUT YOU? /
 WHAT GOOD ARE NIGHTS WITHOUT LOVE DREAMS / YOU MADE MY DREAMING COME TRUE /
 ALL OF YOUR DREAM NIGHTS ARE EMPTY / WHAT GOOD AM I WITHOUT YOU? /
 IF I CAN'T HAVE YOU THERE WITH ME TO SHARE EACH JOY AND CARE /
 WHAT GOOD ARE BIRDS THAT SING, THE FLOWERS IN SPRING OR
 WHAT BARN GOOD IS ANYTHING?
 YOUR LOVE COULD MAKE ME BE SOMETHING / A MILLION THINGS I COULD DO /
 BUT ALL ALONE I'M JUST NOTHING / WHAT GOOD AM I WITHOUT YOU?

Tpt. 2
open

WHAT GOOD AM I WITHOUT YOU (Ellington '30)

Handwritten musical score for Tpt. 2. The score is in G major (one sharp) and 4/4 time. It features several measures with notes and rests, including a section marked "A" with a "3D" annotation and "(Voc.)". A section marked "B" is labeled "16" and "(Spt. 1)". A section marked "C" is labeled "(Tb.)". A section marked "D" is labeled "open". The score ends with a "Fine" marking and a copyright notice "© C. Jacobs '03".

Tb.

WHAT GOOD AM I WITHOUT YOU (Ellington '30)

Handwritten musical score for Tb. The score is in G major (one sharp) and 4/4 time. It features several measures with notes and rests, including a section marked "A" with a "32" annotation and "(Voc.)". A section marked "B" is labeled "in that" and "p (Spt.)". A section marked "C" is labeled "Solo smooth". A section marked "D" is labeled "open". The score ends with a "Fine" marking and a copyright notice "© C. Jacobs '03".

15.

WATT GOOD AM I WITHOUT YOU (Edington '30)

Handwritten musical notation for the first staff, featuring a treble clef, a key signature of one flat (Bb), and a 4/4 time signature. The melody begins with a half note G4, followed by a quarter note A4, and then a half note Bb4. The notation includes various accidentals and a repeat sign.

Handwritten musical notation for the second staff, continuing the melody. It features a treble clef, a key signature of one flat (Bb), and a 4/4 time signature. The notation includes various accidentals, a repeat sign, and a dynamic marking of *mp* (mezzo-piano).

Handwritten musical notation for the third staff, continuing the melody. It features a treble clef, a key signature of one flat (Bb), and a 4/4 time signature. The notation includes various accidentals, a repeat sign, and a dynamic marking of *mp* (mezzo-piano).

Handwritten musical notation for the fourth staff, continuing the melody. It features a treble clef, a key signature of one flat (Bb), and a 4/4 time signature. The notation includes various accidentals, a repeat sign, and a dynamic marking of *mp* (mezzo-piano).

Handwritten musical notation for the fifth staff, continuing the melody. It features a treble clef, a key signature of one flat (Bb), and a 4/4 time signature. The notation includes various accidentals, a repeat sign, and a dynamic marking of *mp* (mezzo-piano).

Handwritten musical notation for the sixth staff, continuing the melody. It features a treble clef, a key signature of one flat (Bb), and a 4/4 time signature. The notation includes various accidentals, a repeat sign, and a dynamic marking of *mp* (mezzo-piano).

Handwritten musical notation for the seventh staff, continuing the melody. It features a treble clef, a key signature of one flat (Bb), and a 4/4 time signature. The notation includes various accidentals, a repeat sign, and a dynamic marking of *mp* (mezzo-piano).

Handwritten musical notation for the eighth staff, continuing the melody. It features a treble clef, a key signature of one flat (Bb), and a 4/4 time signature. The notation includes various accidentals, a repeat sign, and a dynamic marking of *mp* (mezzo-piano).

© 1930